



*Integrated Planning and Partnership Model
for Brownfield Regeneration*

Working towards a common vision – Case Mūkusalas site

FUTURE

Guntars Ruskuls



Why Riga is part of BalticUrbanLab?

BROWNFIELDS

more than 600 buildings and 200 territories

Privately owned

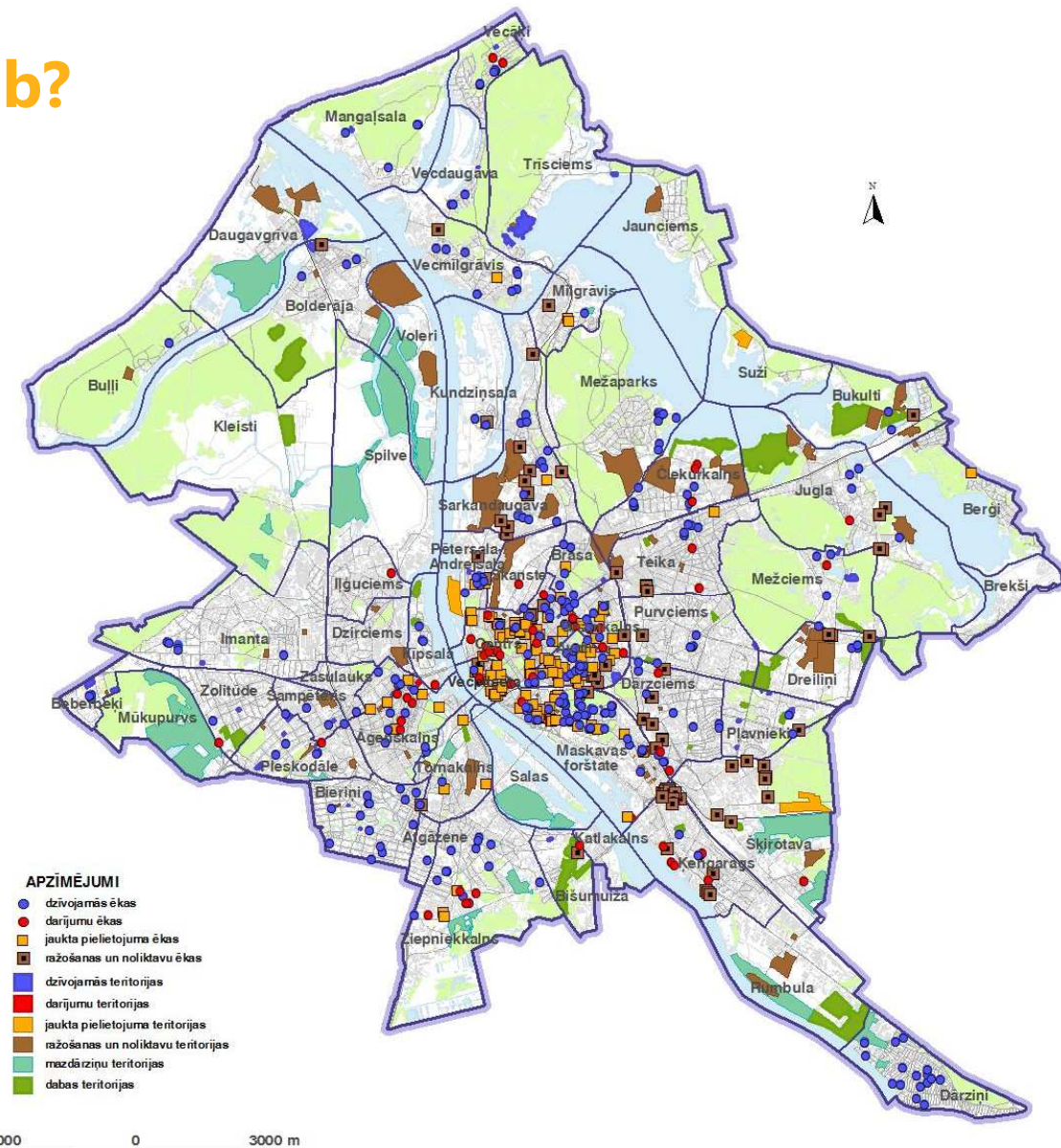
Municipality owned

State owned

Need for new
approaches, planning,
cooperation, methods

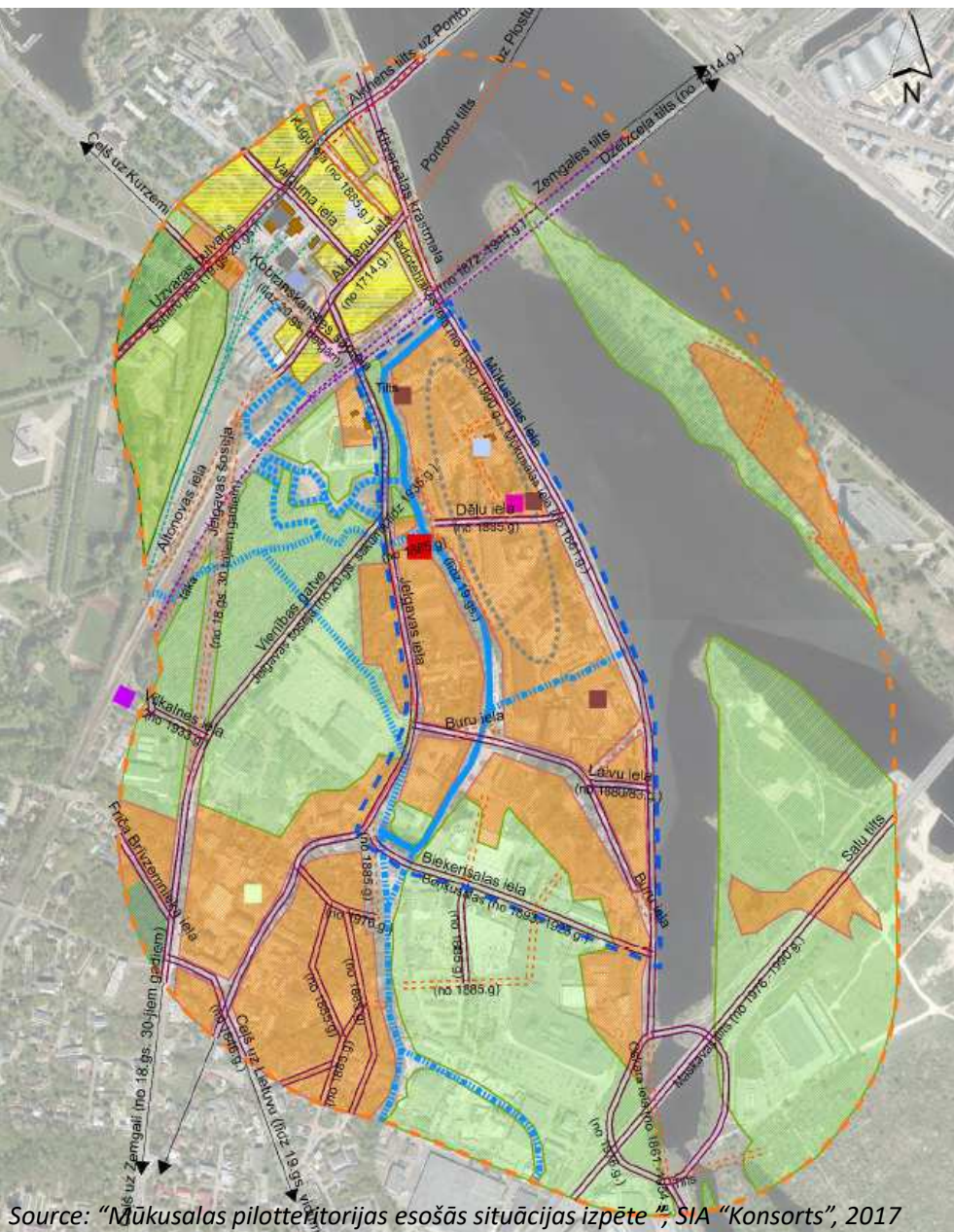


BalticUrbanLab



Source: „Degradēto teritoriju Rīgā apsekojums”, SIA „Datorkarte”, 2012

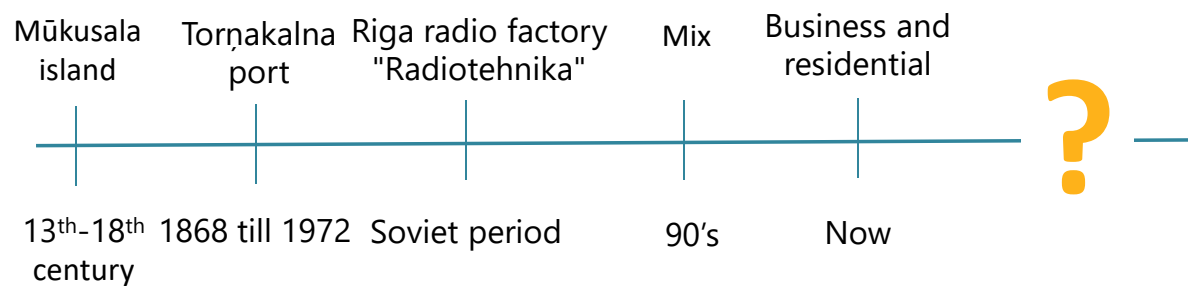
Mūkusala



Source: "Mūkusalas pilotteritorijas esošās situācijas izpēte", SIA "Konsorts", 2017



Torņakalns





Working towards a common vision – Case Mūkusalas site

Why Mūkusala?

HUGE POTENTIAL

Transforming territory

industrial



premises for
business needs

residential
buildings

Priority development territory **Science and Innovations Centre** (*Riga Strategy 2030*)

Almost in the city **center**

green and **blue** structures



RHC Protection belt





Working towards a common vision – Case Mūkusalas site

Challenges

- No common vision and identity
- Transit zone near city center (pollution, noise)
- Brownfields and contaminated ditch
- **Fragmented land ownership, dominated by private sector**
- Lack of services





Working towards a common vision – Case Mūkusalas site

STAKEHOLDERS

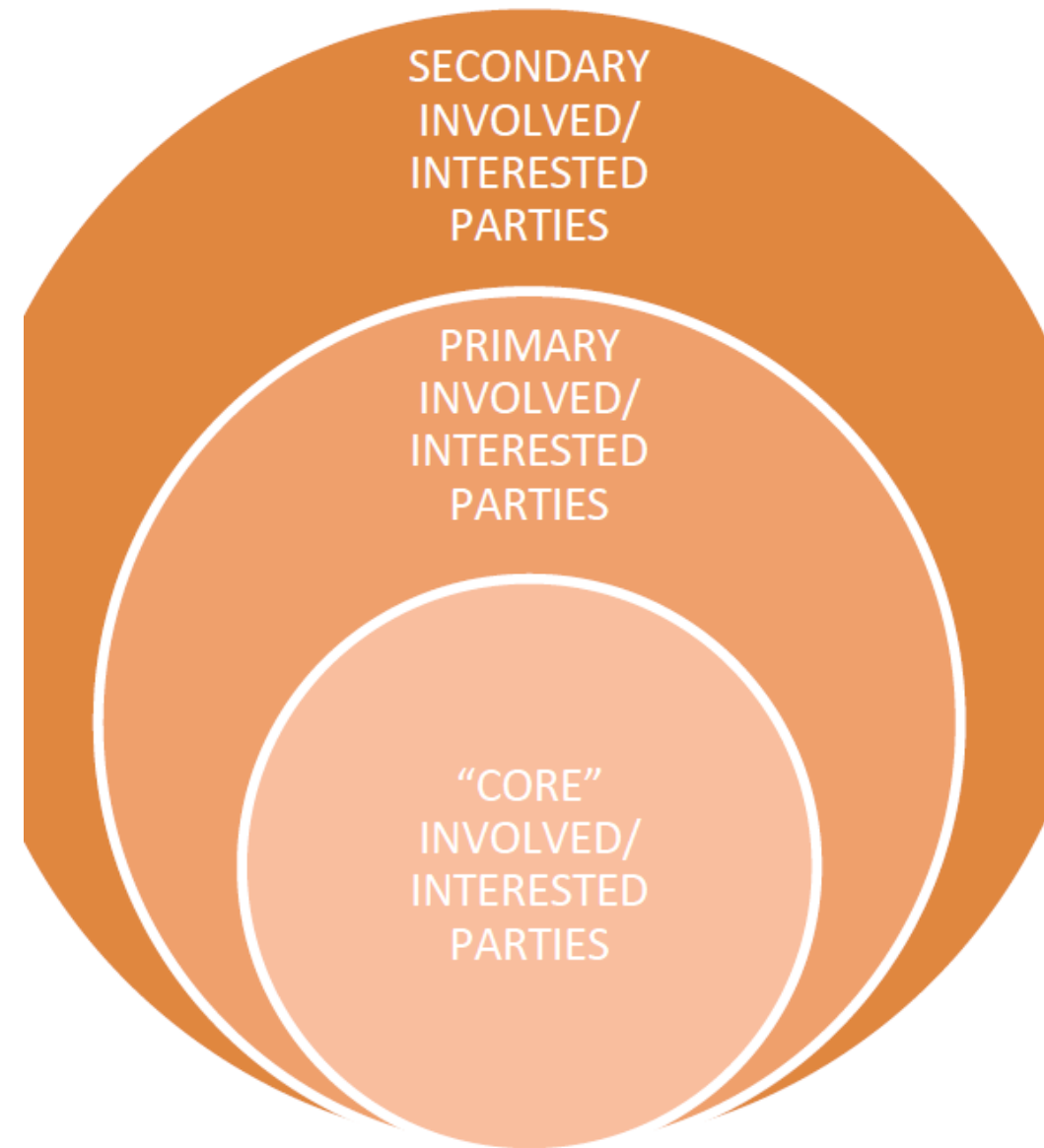
RESIDENTS

STUDENTS

ENTREPRENEURS



MŪKUSALAS
BIZNESA
CENTRS





Working towards a common vision – Case Mūkusalas site

Student competition

Revitalization of brownfields as a social process

Developers of the degraded territory

Information, needs, ideas,
Good reputation

Users of the territory

Influence on future vision
Express point of view
Feeling of co-creating future of the important territory

Labor market

Young professionals
Rise competitiveness

New professionals

Actual practice in profession and in real project
under the leadership of professional staff
Experience in multidisciplinary team working



More in Coffee & Market of methods session



HERITAGE

S
I
T
U
A
T
I
O
N

A
N
A
L
Y
S
I
S

identified
dreams

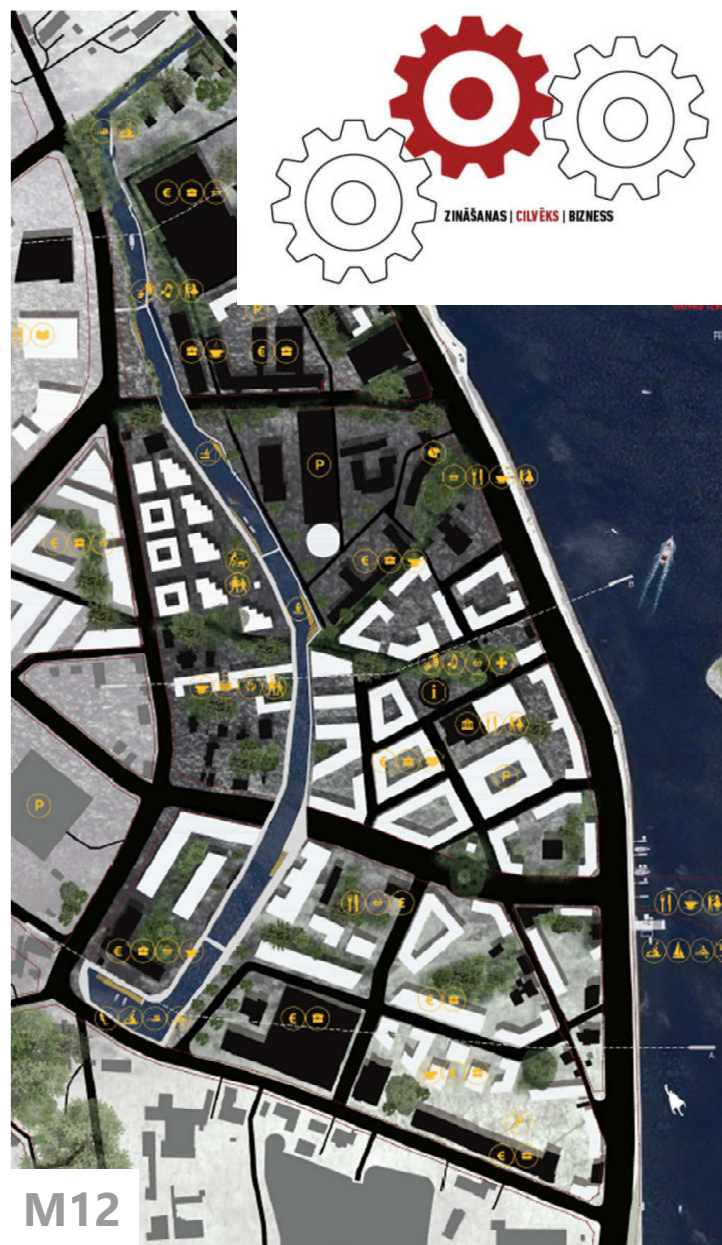
collected
ideas

developed 3
visions

discussed
plans

FUTURE

obstacles needs resources ...



ACTIVITY PLAN FOR MUKUSALA DEVELOPMENT

DIRECTIONS

1. Kileveina ditch transformation to a new recreational area in Riga
2. Mobility and accessibility
3. Public infrastructure
4. Collective placemaking
5. Community strengthening
6. Leisure activities
7. Contemporary planning and management

Principles

Indicative budget source

Private **Municipality** National EU

Period

Short term (till 2022)
Midterm (till 2027)
Long term (till 2050)

Results

Riga City development
programme 2021-2027

Learning process

- it was a learning period for all of us
- importance
of the process
of small actions





Working towards a common vision – Case Mūkusalas site

Thank you!

Guntars Ruskuls

Riga City Council City Development Department

Acting Head of Strategic Management Board

Phone +371 67012920

Email guntars.ruskuls@riga.lv

www.balticurbanlab.eu | www.rdpad.lv



www.balticurbanlab.eu